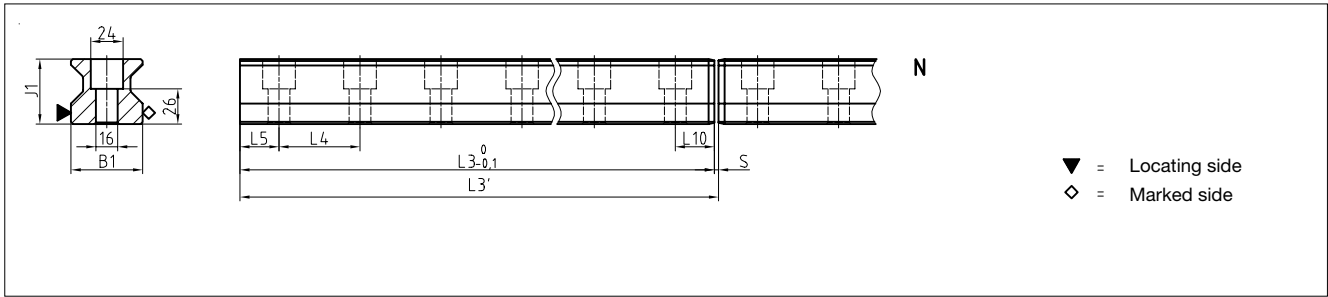


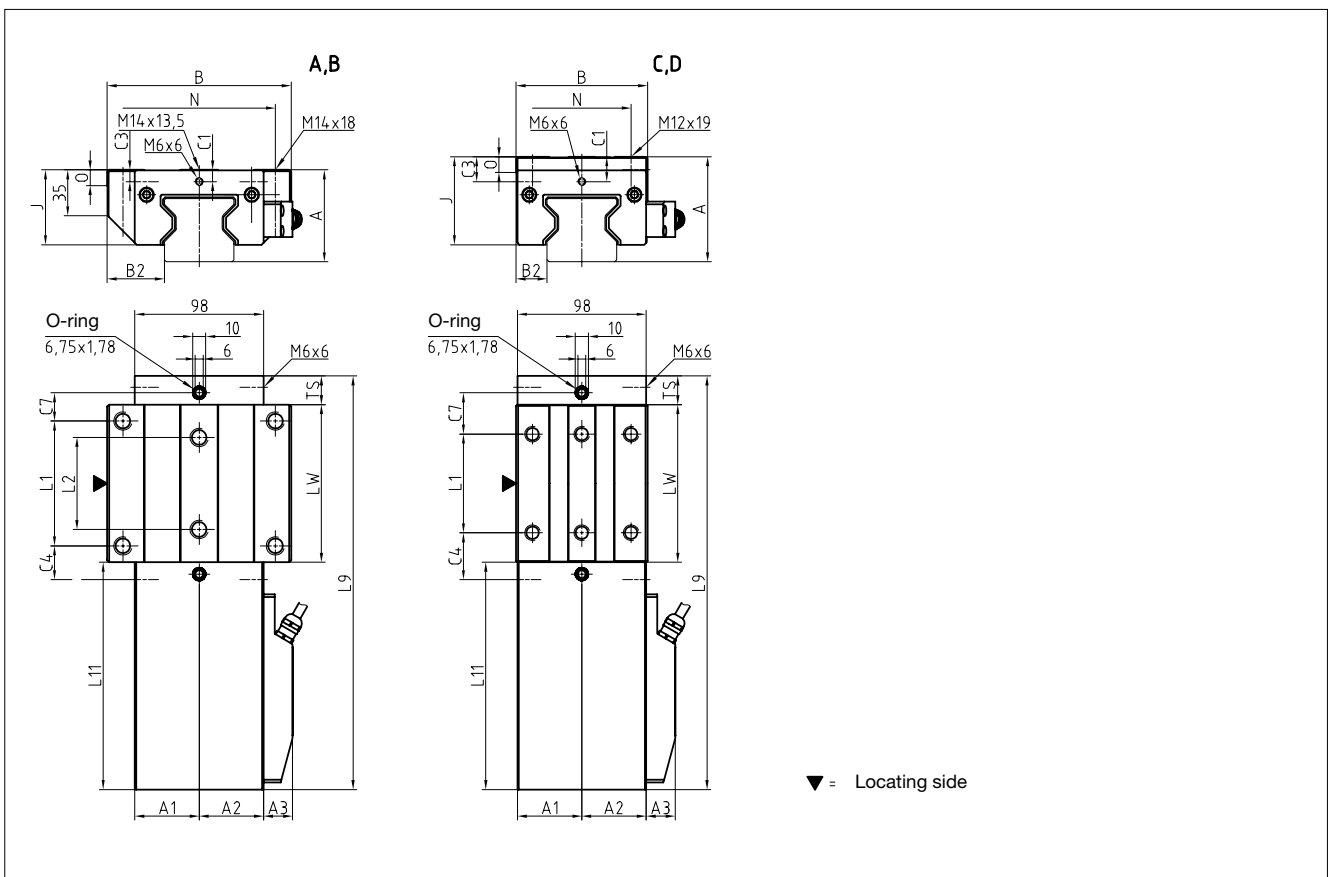
11.2 Technical data and options

AMSA 3L Size 55

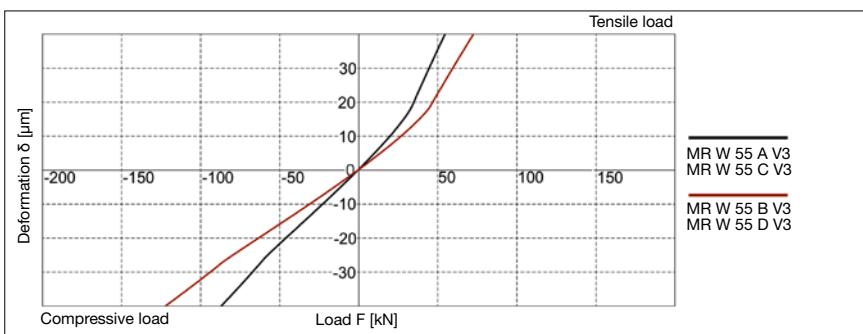
AMSA 3L S 55 Drawings



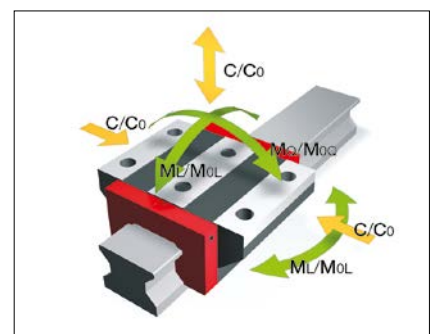
AMSA 3L W 55 Drawings



AMSA 3L W 55 Rigidity diagram



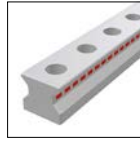
AMSA 3L W 55 Load rating



11.2 Technical data and options

AMSA 3L Size 55

AMSA 3L S 55 Dimensions



| | | AMSA 3L S 55-N | | | |
|---------|------------------------------------|----------------|--|--|--|
| B1: | Rail width | 53 | | | |
| J1: | Rail height | 47.95 | | | |
| L3: | Rail length | 2999.5 | | | |
| L3': | System length | 3 000 | | | |
| S: | Gap size | 0.5 | | | |
| L4: | Spacing of fixing holes | 60 | | | |
| L5/L10: | Position of first/last fixing hole | 29.75 | | | |
| Gew.: | Rail weight, specific (kg/m) | 15.2 | | | |

Available options for AMSA 3L S 55



AMSA 3L W 55 Dimensions and capacities



| | AMSA 3L W 55-A | AMSA 3L W 55-B | AMSA 3L W 55-C | AMSA 3L W 55-D | | |
|------|--|----------------|----------------|----------------|-------|--|
| A: | System height | 70 | 70 | 80 | 80 | |
| A1: | Half width of housing on opposite side | 49 | 49 | 49 | 49 | |
| A2: | Half width of housing on reading head side | 49 | 49 | 49 | 49 | |
| A3: | Projection of reading head | 22 | 22 | 22 | 22 | |
| B: | Carriage width | 140 | 140 | 100 | 100 | |
| B2: | Distance between locating faces | 43.5 | 43.5 | 23.5 | 23.5 | |
| C1: | Position of center front lube hole | 9 | 9 | 19 | 19 | |
| C3: | Position of lateral lube hole | 9 | 9 | 19 | 19 | |
| C4: | Position of lateral lube hole | 25.75 | 46.75 | 35.75 | 46.75 | |
| C7: | Position of top lube hole | 21.5 | 42.5 | 31.5 | 42.5 | |
| J: | Carriage height | 57 | 57 | 67 | 67 | |
| L1: | Exterior fixing hole spacing | 95 | 95 | 75 | 95 | |
| L2: | Interior fixing hole spacing | 70 | 70 | - | - | |
| L9: | Carriage length with housing | 314.7 | 356.7 | 314.7 | 356.7 | |
| L11: | Housing length | 172.9 | 172.9 | 172.9 | 172.9 | |
| Lw: | Inner carriage body length | 120 | 162 | 120 | 162 | |
| N: | Lateral fixing hole spacing | 116 | 116 | 75 | 75 | |
| O: | Reference face height | 12 | 12 | 12 | 12 | |
| Ts: | Front plate thickness | 21.8 | 21.8 | 21.8 | 21.8 | |

Capacities and weights

| | | | | | | |
|-------|---------------------------------------|--------|--------|--------|--------|--|
| C0: | Static load capacity (N) | 237000 | 324000 | 237000 | 324000 | |
| C100: | Dynamic load capacity (N) | 131900 | 180500 | 131900 | 180500 | |
| MOQ: | Static cross moment capacity (Nm) | 7771 | 10624 | 7771 | 10624 | |
| MOL: | Static longitud. moment capacity (Nm) | 4738 | 8745 | 4738 | 8745 | |
| MQ: | Dyn. cross moment capacity (Nm) | 4325 | 5919 | 4325 | 5919 | |
| ML: | Dyn. longitud. moment capacity (Nm) | 2637 | 4872 | 2637 | 4872 | |
| Gew: | Carriage weight (kg) | 6.4 | 8.2 | 5.9 | 7.5 | |

Available options for AMSA 3L W 55

