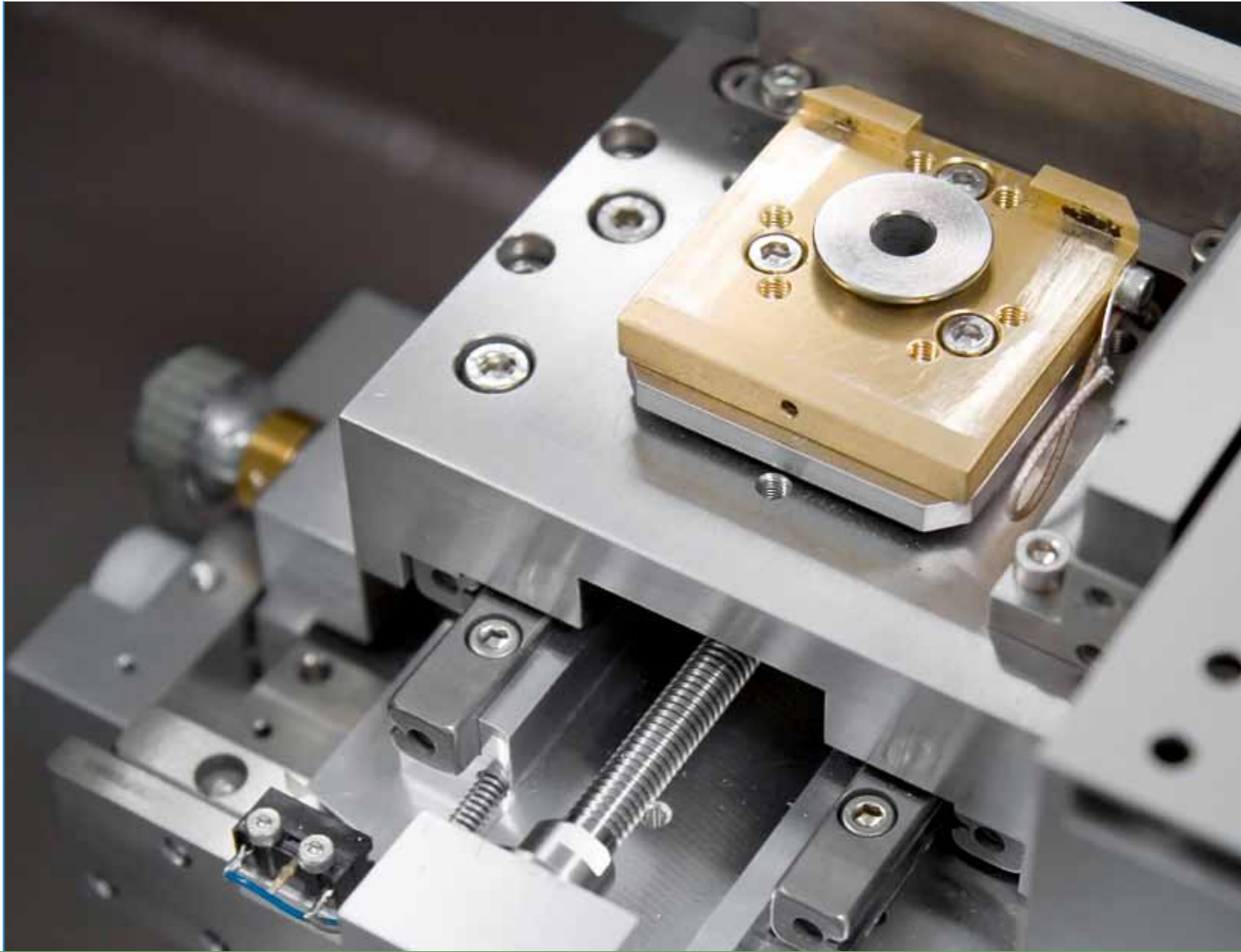
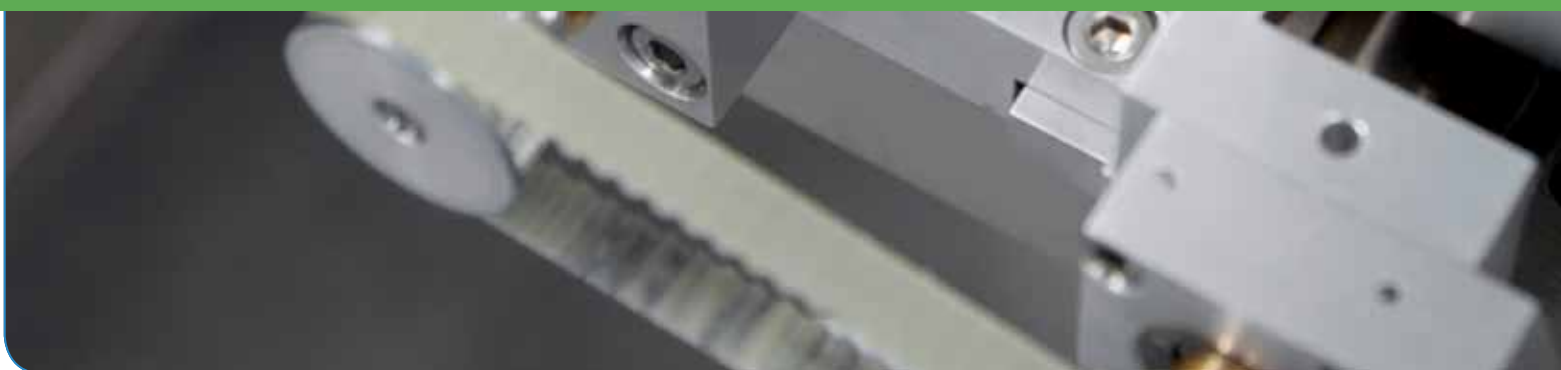
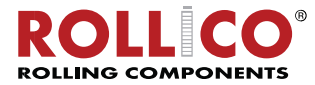


Welcome to where precision is.



Precision Lead Screws





Oficjalny przedstawiciel Steinmeyer w Polsce
www.rollico.com

PRECISION LEAD SCREWS

Lead screws are distinguished from other forms of linear transmission systems mainly by their reproducibility, their non-slip properties, high resolution and low installation dimensions. The precision of a transmission system depends largely on the quality of the drive screw and its nut.

And it is the correct and accurate operation of the transmission system which is usually decisive in determining the quality of the end product. Which is why the production of a screw and nut assembly is something best left to the experts.

Lead Screws are characterized by:

- High precision
- Linearity
- Consistent torque
- Long service life

Steinmeyer has gained a name as producer of high quality micrometers. We use the same multiple tried and tested principles in the production of our precision lead screws for mechanical and equipment engineering applications.

Many years of experience, using modern production and inspection methods, as a specialized manufacturer for precise lead screws ensures our customers technological leadership.

LEAD SCREW with coated thread and backlash free plastic nut



Technical data

- Thread M6 x 1
- Backlash free plastic nut with minimum no-load torque

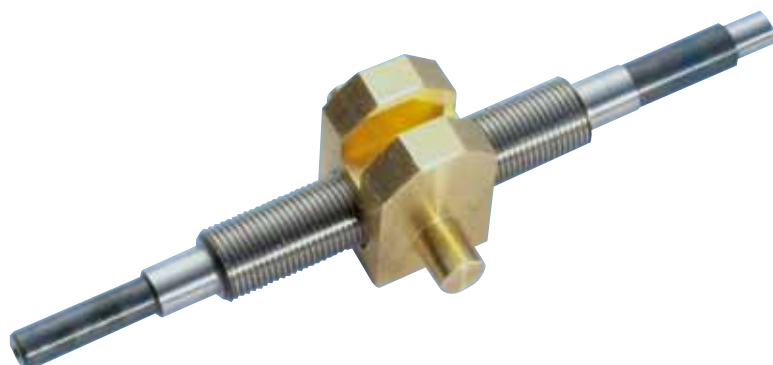
HIGH-PRECISION POSITIONING UNIT with gauge accuracy, with hardened steel nut



Technical data

- High-precision positioning unit with gauge accuracy, with hardened steel nut, containing one straight and one inclined ground groove, places maximum demands on form, position and dimensional tolerances
- Thread M6 x 0.5
- Pitch deviation 0.005 mm max. / 300 mm
- Concentricity error of the thread 0.005 mm max.
- Concentricity error of the nut outside diameter and groove position 0.002 mm max.

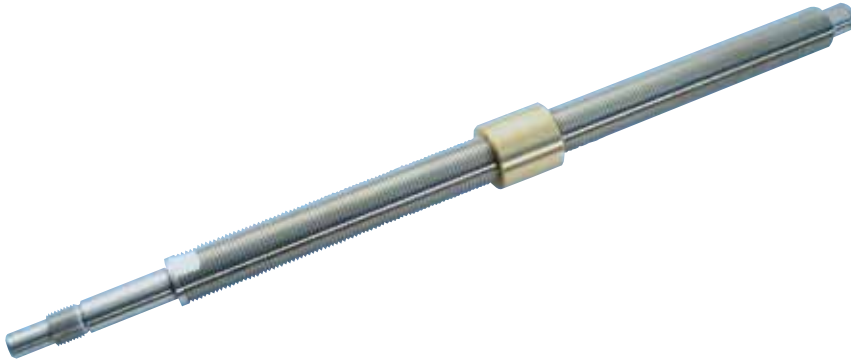
POSITIONING UNIT with ground screw and brass nut



Technical data

- Positioning unit with ground screw and brass nut, places high demands on straightness and concentricity
- Thread M6 x 0.5 mm
- Axial backlash 0.01 mm max.
- Pitch deviation 0.023 mm max. / 300 mm

PRECISION POSITIONING UNIT with ground screw thread and extremely small nut



Technical data

- Thread M10 x 0.5
- Pitch deviation 0.02 mm max.

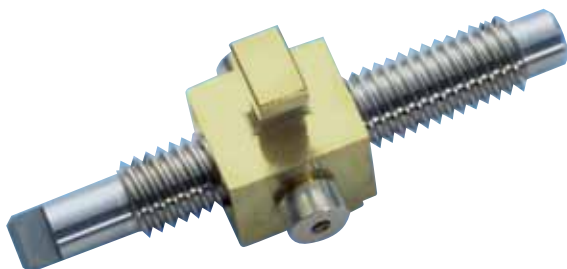
PRECISION POSITIONING UNIT with ground screw thread and custom nut



Technical data

- Thread 5/16" – 40 NS
- Thread M6 x 0.5
- Pitch deviation 0.02 mm max.
- Axial backlash 0.005 mm max.

SPECIAL POSITIONING UNIT for use in the aviation industry, screw and nut in special materials



Technical data

- Optimized weight characteristics and for use under extreme environmental conditions
- Thread ACME 0.250-16-4 G
- Axial backlash 0.08 mm max.
- Material in accordance with MIL-S-7920 / QQ-M-80
- Surface treated in accordance with MIL-S-5002
- Thread UNF 0.250-28

Welcome to where precision is.