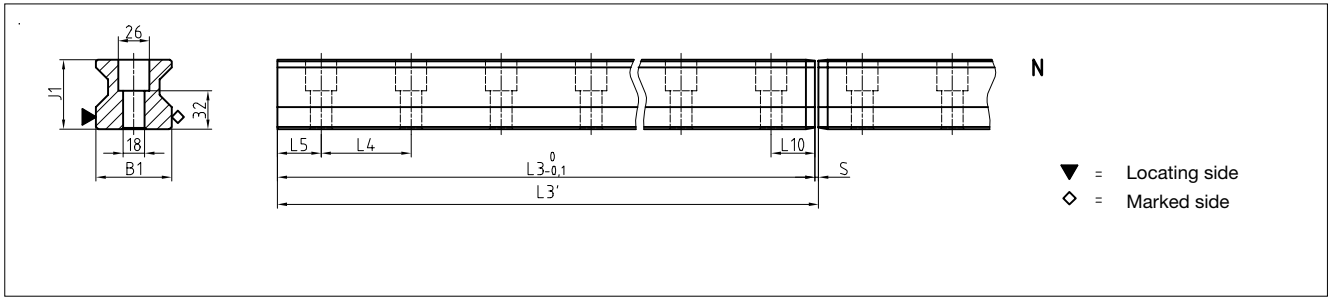


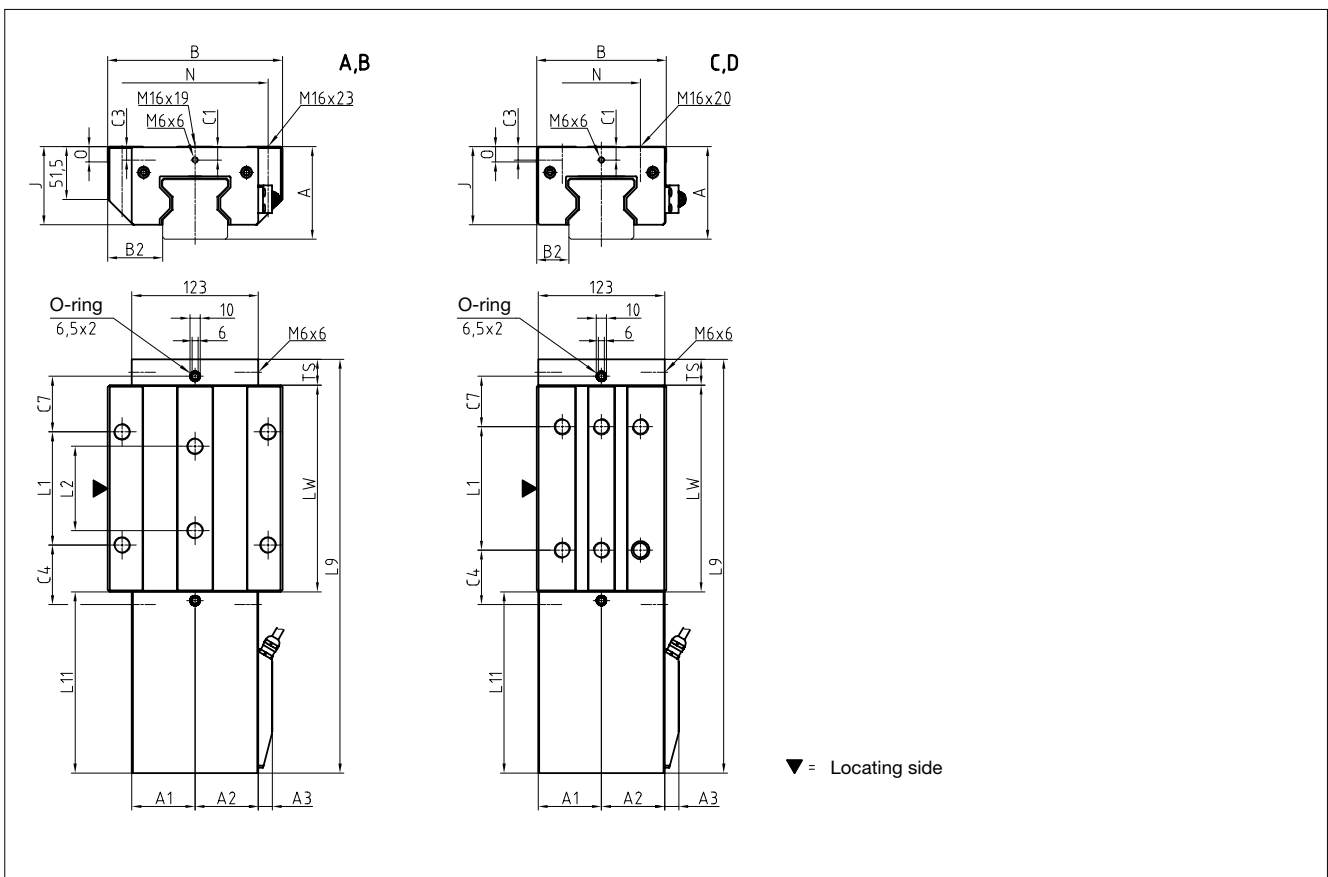
11.2 Technical data and options

AMSA 3L Size 65

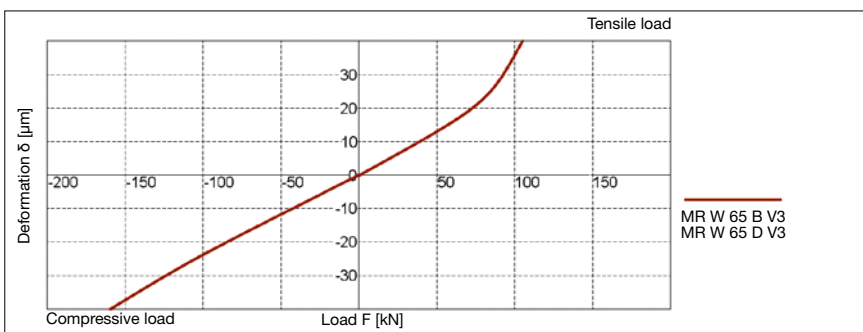
AMSA 3L S 65 Drawings



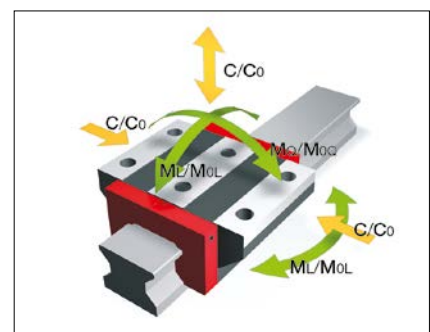
AMSA 3L W 65 Drawings



AMSA 3L W 65 Rigidity diagram



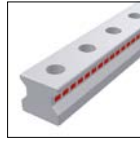
AMSA 3L W 65 Load rating



11.2 Technical data and options

AMSA 3L Size 65

AMSA 3L S 65 Dimensions

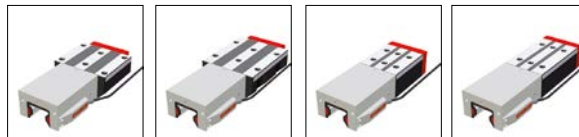


| | | AMSA 3L S 65-N | | | |
|---------|------------------------------------|----------------|--|--|--|
| B1: | Rail width | 63 | | | |
| J1: | Rail height | 57.95 | | | |
| L3: | Rail length | 2999.5 | | | |
| L3': | System length | 3 000 | | | |
| S: | Gap size | 0.5 | | | |
| L4: | Spacing of fixing holes | 75 | | | |
| L5/L10: | Position of first/last fixing hole | 37.25 | | | |
| Gew.: | Rail weight, specific (kg/m) | 22.8 | | | |

Available options for AMSA 3L S 65



AMSA 3L W 65 Dimensions and capacities



| | AMSA 3L W 65-A | AMSA 3L W 65-B | AMSA 3L W 65-C | AMSA 3L W 65-D | | |
|------|--|----------------|----------------|----------------|-------|--|
| A: | System height | 90 | 90 | 90 | 90 | |
| A1: | Half width of housing on opposite side | 61.5 | 61.5 | 61.5 | 61.5 | |
| A2: | Half width of housing on reading head side | 61.5 | 61.5 | 61.5 | 61.5 | |
| A3: | Projection of reading head | 13.5 | 13.5 | 13.5 | 13.5 | |
| B: | Carriage width | 170 | 170 | 126 | 126 | |
| B2: | Distance between locating faces | 53.5 | 53.5 | 31.5 | 31.5 | |
| C1: | Position of center front lube hole | 13 | 13 | 13 | 13 | |
| C3: | Position of lateral lube hole | 13 | 13 | 13 | 13 | |
| C4: | Position of lateral lube hole | 31.75 | 58 | 51.75 | 53 | |
| C7: | Position of top lube hole | 27.75 | 54 | 47.75 | 49 | |
| J: | Carriage height | 76 | 76 | 76 | 76 | |
| L1: | Exterior fixing hole spacing | 110 | 110 | 70 | 120 | |
| L2: | Interior fixing hole spacing | 82 | 82 | - | - | |
| L9: | Carriage length with housing | 349.7 | 402.2 | 349.7 | 402.2 | |
| L11: | Housing length | 176.2 | 176.2 | 176.2 | 176.2 | |
| Lw: | Inner carriage body length | 148.5 | 201 | 148.5 | 201 | |
| N: | Lateral fixing hole spacing | 142 | 142 | 76 | 76 | |
| O: | Reference face height | 15 | 15 | 15 | 15 | |
| Ts: | Front plate thickness | 25 | 25 | 25 | 25 | |

Capacities and weights

| | | | | | | |
|-------|---------------------------------------|--------|--------|--------|--------|--|
| C0: | Static load capacity (N) | 419000 | 530000 | 419000 | 530000 | |
| C100: | Dynamic load capacity (N) | 232000 | 295000 | 232000 | 295000 | |
| MOQ: | Static cross moment capacity (Nm) | 16 446 | 20912 | 16446 | 20912 | |
| MOL: | Static longitud. moment capacity (Nm) | 10754 | 17930 | 10754 | 17930 | |
| MQ: | Dyn. cross moment capacity (Nm) | 9154 | 11640 | 9154 | 11640 | |
| ML: | Dyn. longitud. moment capacity (Nm) | 5954 | 9980 | 5954 | 9980 | |
| Gew: | Carriage weight (kg) | 12.6 | 15.9 | 10.3 | 12.8 | |

Available options for AMSA 3L W 65

